

# KOMATSU®

## PC800LC-8 MATERIAL HANDLER

**NET HORSEPOWER**  
363 kW **487 HP** @ 1800 rpm

**OPERATING WEIGHT**  
87796–89339 kg  
**193,555–196,955 lb**

**REACH**  
16.8–20.7 m **55'–68'**

**PC**  
**800**  
**LC**



Photos may include optional equipment

MATERIAL HANDLER

# WALK AROUND

*The Komatsu PC Material Handling series is a full product line with solutions for all of your material handling needs. Komatsu...the unparalleled, one-stop shopping source for rugged and cutting edge material handling equipment!*

**For Use In:**

- Scrap Processing
  - Stockpiling of recycled materials
  - Transfer station material feeding
- Bulk Material Handling
  - Coal, coke, and ore
  - Sand and gravel
  - Grain

**Material Handling System Includes:**

- Choice of 16.8 m **55'** or 20.7 m **68'** two-piece attachment with underslung hydraulic cylinders
- Plumbing for grapple operation
- Electrical cable for magnet operation
- Centralized lube plumbing
- Magnet connecting link
- Manual tilt cab riser
- Access platform with stairs and railings
- Front window guard
- Hydraulic control package provides functions to open, close, and rotate grapple. Includes control handles and switches in cab
- Hydraulic-driven 33 kw generator
- Generator controller (Hubbell) and magnet instrumentation mounted in the cab riser. Load power gauge with operating switches installed in operator's cab
- Parts, service, and operator's manuals



**Features:**

- Long track provides excellent stability
- Optional gauge widener improves stability and production capability
- Dual function machine, grapple or magnet operation
- Elevated cab for excellent all-around visibility
- Two-pump system provides smooth, fast, compound movements maximizing productivity
- Centralized lubrication points decrease service time



KOMTRAX equipped machines can send location, SMR and operation maps to a secure website utilizing wireless technology. Machines also relay error codes, cautions, maintenance items, fuel levels, and much more.

**NET HORSEPOWER**  
363 kW 487 HP @ 1800 rpm

**OPERATING WEIGHT**  
87796 – 89339 kg  
193,555 – 196,955 lb

**REACH**  
16.8 – 20.7 m  
55' – 68'

### *Hydraulics*

Unique two-pump system provides smooth compound movement of the work equipment. Electronic Open-center Load Sensing System (EOLSS) controls all pumps for efficient engine power use. This system also reduces hydraulic loss during operation.

### *Large Comfortable Cab*

Low noise and vibration with cab damper mounting.

### *Environment-Friendly Clean Engine*

The PC800LC-8 gets its exceptional power and work capacity from a Komatsu SAA6D140E-5 engine. Net output is 363 kW **487 HP**, providing increased hydraulic power and improved fuel efficiency.

Komatsu's SAA6D140E-5 engine is EPA Tier 3 emissions certified.



# PC800LC-8 MATERIAL HANDLER

## SPECIFICATIONS



### ENGINE

Model	Komatsu SAA6D140E-5
Type	Water-cooled, 4-cycle, direct injection
Aspiration	Turbocharged, aftercooled, cooled EGR
Number of cylinders	6
Bore	140 mm <b>5.51"</b>
Stroke	165 mm <b>6.50"</b>
Piston displacement	15.24 ltr <b>930 in<sup>3</sup></b>
Governor	All-speed control, electronic
Horsepower:	
SAE J1995	Gross 370 kW <b>496 HP</b>
ISO 9249 / SAE J1349	Net 363 kW <b>487 HP</b>
Hydraulic fan at maximum speed	Net 338 kW <b>454 HP</b>
Rated rpm	1800 rpm
Fan drive type	Hydraulic

EPA Tier 3 and EU stage 3A emissions certified.



### HYDRAULICS

Type	Electronic Open-center Load Sensing System (EOLSS)
Number of selectable working modes	3
Main pump:	
Type	Two (2) variable capacity piston pumps
Pumps for	Boom, arm, bucket, swing, and travel circuits
Maximum flow	2 x 494 ltr/min <b>2 x 130.5 U.S. gal/min</b>
Fan drive pump	Variable capacity piston type
Hydraulic motors:	
Travel	2 x axial piston motors with parking brake
Swing	2 x axial piston motors with swing holding brake
Relief valve setting:	
Implement circuits	31.4 MPa 320 kg/cm <sup>2</sup> <b>4,550 psi</b>
Travel circuit	34.3 MPa 350 kg/cm <sup>2</sup> <b>4,980 psi</b>
Swing circuit	28.4 MPa 290 kg/cm <sup>2</sup> <b>4,120 psi</b>
Heavy lift circuit	34.3 MPa 350 kg/cm <sup>2</sup> <b>4,980 psi</b>
Pilot circuit	2.9 MPa 30 kg/cm <sup>2</sup> <b>430 psi</b>
Hydraulic cylinders:	
(Number of cylinders – bore x stroke x rod diameter)	
Boom	2–202 mm x 1727 mm x 127 mm <b>8" x 68" x 5"</b>
Arm	(55' front) 1–229 mm x 1829 mm x 152 mm <b>9" x 72" x 6"</b> (68' front) 1–216 mm x 1829 mm x 152 mm <b>8.5" x 72" x 6"</b>



### DRIVES AND BRAKES

Steering control	Two levers with pedals
Drive method	Fully hydrostatic
Travel motors	Axial piston motors, in-shoe design
Reduction system	Planetary double reduction
Maximum drawbar pull	559 kN 57000 kg <b>125,660 lb</b>
Gradeability	70%
Maximum travel speed: High	4.2 km/h <b>2.6 mph</b>
Low	2.8 km/h <b>1.7 mph</b>
Service brake	Hydraulic lock
Parking brake	Oil disc brake



### SWING SYSTEM

Drive method	Hydraulic motors (2)
Swing reduction	Planetary gear
Swing circle lubrication	Grease-bathed
Swing lock	Oil disc brake
Swing speed	6.8 rpm
Swing torque	28968 kg•m <b>209,461 ft. lbs.</b>



### UNDERCARRIAGE

Center frame	H-leg frame
Track frame	Box-section
Track type	Sealed
Track adjuster	Hydraulic
Number of shoes	51 each side
Number of carrier rollers	3 each side
Number of track rollers	9 each side



### COOLANT AND LUBRICANT CAPACITY (REFILLING)

Fuel tank	980 ltr <b>258.9 US gal</b>
Radiator	100 ltr <b>26.4 US gal</b>
Engine	58 ltr <b>15.3 US gal</b>
Final drive, each side	20 ltr <b>5.3 US gal</b>
Swing drive	2 x 24.5 ltr <b>2 x 6.5 US gal</b>
Hydraulic tank	440 ltr <b>116.2 US gal</b>



### OPERATING WEIGHT (APPROXIMATE)

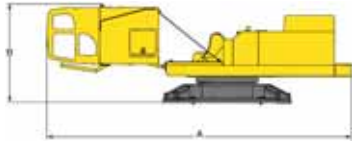
Operating weight w/o Grapple:	
16.8 m <b>55'</b>	87796 kg <b>193,555 lb</b>
20.7 m <b>68'</b>	89339 kg <b>196,955 lb</b>





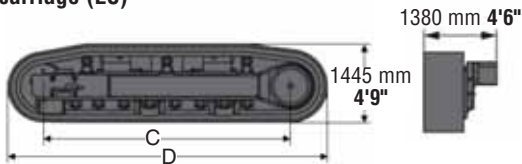
SHIPPING WEIGHTS AND DIMENSIONS (APPROXIMATE)

Upper Structure



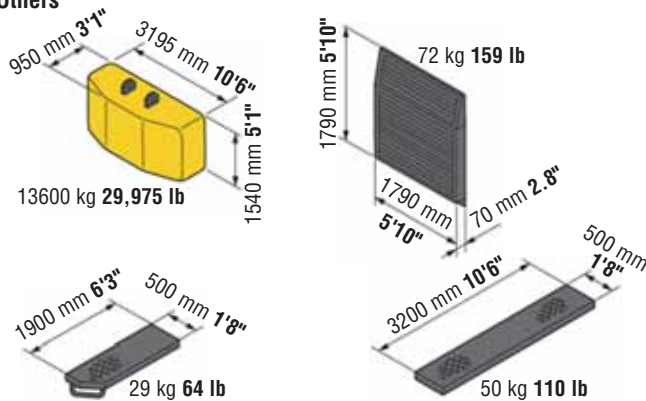
	Description	Dimensions
A	Overall length	6299 mm 20'8"
B	Overall height	3023 mm 9'11"
	Weight (Includes guage widener)	33600 kg 74,000 lbs

Undercarriage (LC)



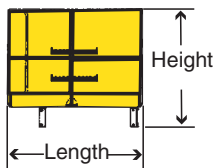
	Description	Dimensions
C	Length of track on ground	5020 mm 16'6"
D	Length of track	6330 mm 20'9"
	Track gauge (Std)	3500 mm 11'6"
	Track gauge (Opt-widened)	4267 mm 14'0"
	Overall width (Std):	
	Extended	4623 mm 15'2"
	Retracted	4064 mm 13'4"
	Overall width (Opt-widened):	
	Extended	5385 mm 17'8"
	Retracted	4826 mm 15'10"
	Weight (Per side)	13600 kg 30,000 lb

Others

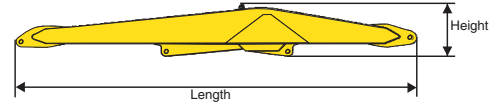


Platform, Ladder, and Railing

Description	1981 mm 78" (6'6") Riser
Dimensions	L x W x H
mm	1845 x 1245 x 1168
ft in	6'1" x 4'1" x 3'10"
Weight	
kg	200
lb	440

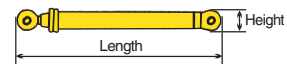


2-Piece Front



Description	Model	K02US55-PC800-8		K02US68-PC800-8	
		16.8 m 55' front Boom	Stick	20.7 m 68' front Boom	Stick
Length	mm ft in	9398 30'10"	7975 26'2"	11684 38'4"	9296 30'6"
Width	mm ft in	1321 4'4"	559 1'10"	1372 4'6"	686 2'3"
Height	mm ft in	1448 4'9"	1473 4'10"	1524 5'0"	1626 5'4"
Weight	kg lb	7394 16,300	3311 7,300	8324 18,350	5806 12,800

Arm Cylinder Group



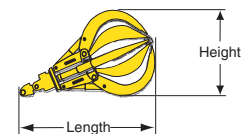
Description		2-Piece Front 55'	2-Piece Front 68'
Length	mm ft in	3023 9'11"	3023 9'11"
Width	mm ft in	559 1'10"	559 1'10"
Height	mm ft in	305 1'0"	305 1'0"
Weight	kg lb	987 2,175	932 2,054
Bore	mm ft in	229 9.0"	216 8.5"

Boom Cylinders



Length	mm ft in	2896 9'6"
Width	mm ft in	305 1'0"
Height	mm ft in	305 1'0"
Weight	kg lb	590 ea. x 2 1,300 ea. x 2

Grapple



Description	Model LO300C	Model LO400C
Dimensions	L x W x H	L x W x H
mm	3505 x 2134 x 2134	3658 x 2438 x 2438
ft in	11'6" x 7'0" x 7'0"	12'0" x 8'0" x 8'0"
Weight		
kg	3629	3719
lb	8,000	8,200

# PC800LC-8 MATERIAL HANDLER

# LIFTING CAPACITIES



## LIFTING CAPACITY

- A: Reach from swing center
- B: Stick tip height
- C: Lifting capacity
- Cf: Rating over front
- Cs: Rating over side

Conditions:  
(In addition to PC800LC-8 base machine)

- 2-piece front attachment with hydraulic cylinders
- 1981 mm **78"** manual tilt cab riser with platform, stairs, and handrails
- Front window guard

- Hydraulic plumbing and control package for grapple operation
- Carbody widened 762 mm **30"** raised 102 mm **4"**
- 4,400 psi working pressure
- 4267 mm **168"** gauge
- 1110 mm **44"** track shoes
- 229 mm **9.0"** bore arm cylinder

PC800LC-8		Young 2-Piece Front - 16.8 m 55' (K02US55-PC800LC-8)																		Unit: kg lb		
A	B	3.0 m 10'		4.6 m 15'		6.1 m 20'		7.6 m 25'		9.1 m 30'		10.7 m 35'		12.2 m 40'		13.7 m 45'		15.2 m 50'		16.8 m 55'		
		Cf	Cs	Cf	Cs	Cf	Cs	Cf	Cs	Cf	Cs	Cf	Cs	Cf	Cs	Cf	Cs	Cf	Cs	Cf	Cs	
18.3 m	60'																					
16.8 m	55'									*9400	*9400											
15.2 m	50'									*11900	*11900	*9500	*9500									
13.7 m	45'											*11400	*11400	*8900	*8900							
12.2 m	40'											*12300	*12300	*10800	*10800	*7600	*7600					
10.7 m	35'											*13100	*13100	*12000	*12000	*9800	*9800					
9.1 m	30'											*13900	*13900	*12800	*12800	*11200	*11200	*7700	*7700			
7.6 m	25'									*14800	*14800	*14300	*14300	*13100	*13100	*12000	*12000	*9400	*9400			
6.1 m	20'							*15500	*15500	*16700	*16700	*14900	*14900	*13400	*13400	*12100	*12100	*10700	*10700			
4.6 m	15'					*17900	*17900	*20300	*20300	*17700	*17700	*15500	*15500	*13700	*13700	*12300	*12300	*11000	*11000	*6000	*6000	
3.0 m	10'					*28200	*28200	*22400	22400	*18600	18600	*16000	*16000	*14000	*14000	*12400	*12400	*10900	*10900	*6700	*6700	
1.5 m	5'					*30100	*30100	*23500	*23500	*19300	19300	*16300	*16300	*14100	*14100	*12300	*12300	*10700	*10700	*6600	*6600	
0.0 m	0'			*5400	*5400	*17200	*17200	*23900	*23900	*19500	*19500	*16400	*16400	*14000	*14000	*12100	*12100	*10200	*10200			
-1.5 m	-5'			*6400	*6400	*14300	*14300	*23400	*23400	*19100	*19100	*16000	*16000	*13600	*13600	*11500	*11500	*9400	*9400			
-3.0 m	-10'			*8100	*8100	*14600	*14600	*21900	*21900	*18100	*18100	*15100	*15100	*12700	*12700	*10400	*10400					
-4.6 m	-15'					*16000	*16000	*19500	*19500	*16100	*16100	*13400	*13400	*11100	*11100							

**Note:** Capacities are measured at the bare stick tip.

Capacities marked with an asterisk (\*) are limited by hydraulic capacities rather than stabilities.

1. Lifting capacities shown do not exceed 75% of minimum tipping loads or 87% of hydraulic capacities. Data supplied by AEM.
2. Lifting capacities shown should not be exceeded. Weight of all lifting accessories must be considered part of the load.
3. Lifting capacities assume the machine is standing level on a firm, uniform supporting surface. The user must make allowances for unfavorable job conditions such as soft or uneven ground or sudden stopping of loads.
4. The least stable position is over the side.
5. The operator should be fully acquainted with the Operation Manual before operating the machine.
6. Capacities apply only to the machine equipped as stated here.
7. Capacities are based on PCSA gross rated loads.



## LIFTING CAPACITY

A: Reach from swing center  
 B: Stick tip height  
 C: Lifting capacity  
 Cf: Rating over front  
 Cs: Rating over side

Conditions:  
 (In addition to PC800LC-8 base machine)

- 2-piece front attachment with hydraulic cylinders
- 1981 mm 78" manual tilt cab riser with platform, stairs, and handrails
- Front window guard

- Hydraulic plumbing and control package for grapple operation
- Carbody widened 762 mm 30" raised 102 mm 4"
- 4,550 psi working pressure
- 4267 mm 168" gauge
- 1110 mm 44" track shoes
- 216 mm 8.5" bore arm cylinder

PC800LC-8		Young 2-Piece Front - 20.7 m 68' (K02US68-PC800LC-8)																				Unit: kg lb	
A	B	4.6 m 15'		6.1 m 20'		7.6 m 25'		9.1 m 30'		10.7 m 35'		12.2 m 40'		13.7 m 45'		15.2 m 50'		16.8 m 55'		18.3 m 60'		19.8 m 65'	
		Cf	Cs	Cf	Cs	Cf	Cs	Cf	Cs	Cf	Cs	Cf	Cs	Cf	Cs	Cf	Cs	Cf	Cs	Cf	Cs	Cf	Cs
21.3 m 70'								*9800	*9800														
19.8 m 65'										*10200	*10200												
18.3 m 60'										*10000	*10000	*7400	*7400										
16.8 m 55'										*11000	*11000	*9700	*9700	*7000	*7000								
15.2 m 50'										*11400	*11400	*10600	*10600	*9100	*9100								
13.7 m 45'										*11300	*11300	*10500	*10500	*9800	*9800	*8300	*8300						
12.2 m 40'										*11400	*11400	*10500	*10500	*9800	*9800	*9100	*9100	*6600	*6600				
10.7 m 35'										*11600	*11600	*10700	*10700	*9800	*9800	*9100	*9100	*8300	*8300				
9.1 m 30'										*13000	*13000	*11800	*11800	*10800	*10800	*9900	*9900	*9200	*9200	*8400	*8400	*5500	*5500
7.6 m 25'										*13500	*13500	*12200	*12200	*11000	*11000	*10100	*10100	*9200	*9200	*8500	*8500	*7100	*7100
6.1 m 20'										*14000	*14000	*16100	*16100	*14100	*14100	*12500	*12500	*11200	*11200	*10200	*10200	*9300	9300
4.6 m 15'										*18900	*18900	*20400	*20400	*17000	*17000	*14700	*14700	*12900	*12900	*11500	*11500	*10300	*10300
3.0 m 10'										*27600	*27600	*21600	*21600	*17800	*17800	*15100	*15100	*13200	*13200	*11700	*11700	*10400	*10400
-1.5 m 5'										*8400	*8400	*22500	*22500	*18300	*18300	*15500	*15500	*13400	*13400	*11700	*11700	*10400	*9300
0.0 m 0'										*5900	*5900	*17000	*17000	*18500	*18500	*15600	*15600	*13400	*13400	*11700	*11700	*10300	10300
-1.5 m -5'										*2500	*2500	*5800	*5800	*12700	*12700	*18200	*18200	*15300	*15300	*13200	*13200	*11500	*11500
-3.0 m -10'										*3800	*3800	*6500	*6500	*11900	*11900	*17500	*17500	*14800	*14800	*12700	*12700	*11000	*11000
-4.6 m -15'										*7600	*7600	*12300	*12300	*16200	*16200	*13900	*13900	*11900	*11900	*10300	*10300	*8800	*8800
-6.1 m -20'										*13200	*13200	*14500	*14500	*12500	*12500	*10800	*10800	*9200	*9200	*7800	*7800		

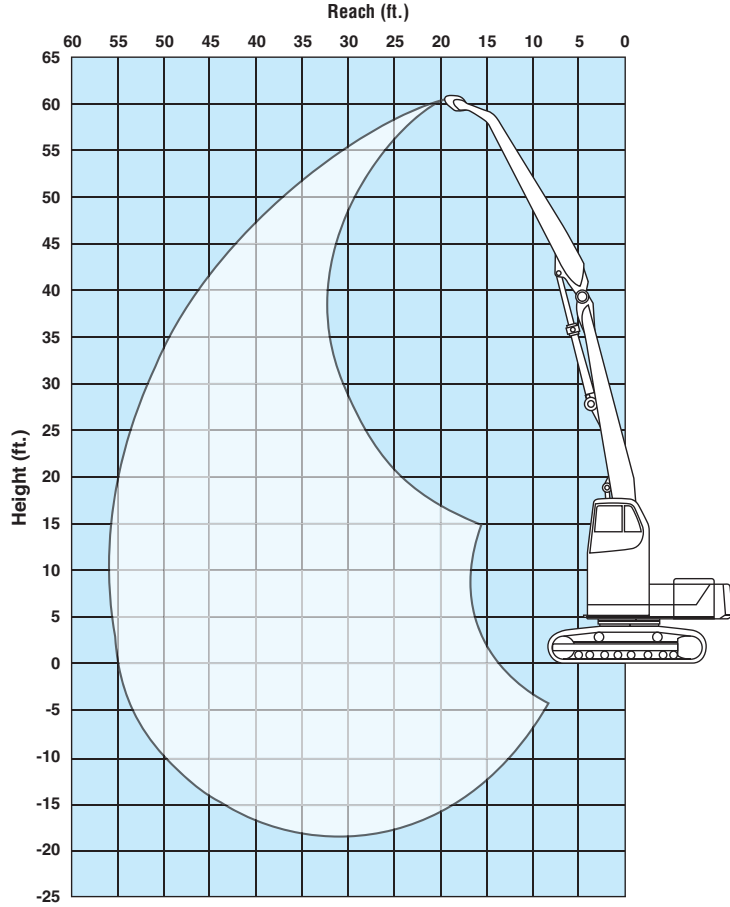
Note: Capacities are measured at the bare stick tip.  
 Capacities marked with an asterisk (\*) are limited by hydraulic capacities rather than stabilities.

1. Lifting capacities shown do not exceed 75% of minimum tipping loads or 87% of hydraulic capacities. Data supplied by AEM.
2. Lifting capacities shown should not be exceeded. Weight of all lifting accessories must be considered part of the load.
3. Lifting capacities assume the machine is standing level on a firm, uniform supporting surface. The user must make allowances for unfavorable job conditions such as soft or uneven ground or sudden stopping of loads.
4. The least stable position is over the side.
5. The operator should be fully acquainted with the Operation Manual before operating the machine.
6. Capacities apply only to the machine equipped as stated here.
7. Capacities are based on PCSA gross rated loads.

# WORKING RANGES

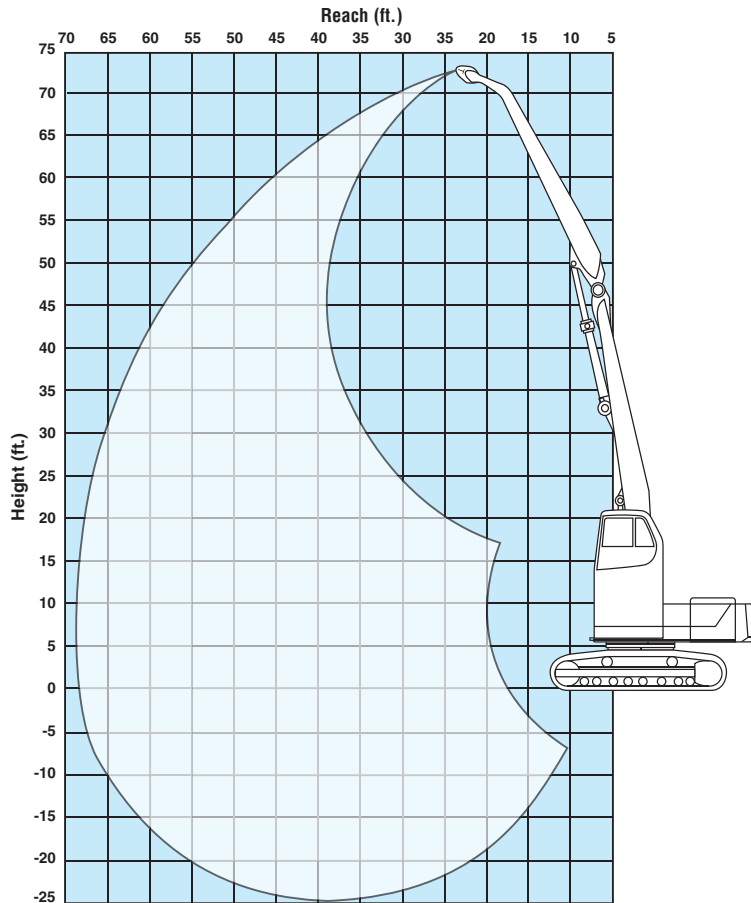
**Young 2-Piece Front — 16.8 m 55'**  
(K02US55-PC800LC-8)

Maximum Height — 18.4 m **60'6"**  
Maximum Reach — 16.8 m **55.0'**



**Young 2-Piece Front — 20.7 m 68'**  
(K02US68-PC800LC-8)

Maximum Height — 22.2 m **72'10"**  
Maximum Reach — 20.7 m **68.0'**



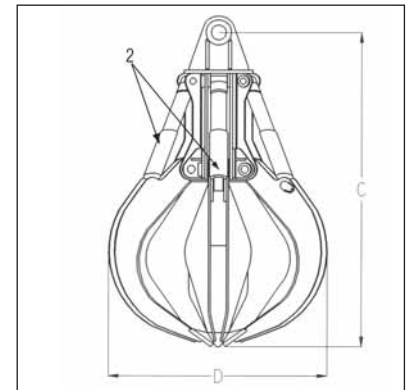
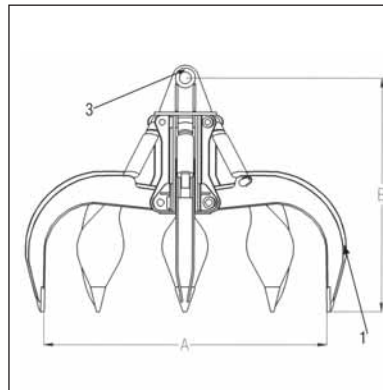


# ATTACHMENTS

### Grapple Selection Guide

Komatsu Model		PC800LC-8	
Recommended Grapple Model		Young	
		LO400C 16.8 m 55' front	LO300C 20.7 m 68' front
Size	m <sup>3</sup>	3.06	2.29
	yd <sup>3</sup>	<b>4.0</b>	<b>3.0</b>
Weight	kg	3719	3629
	lb	<b>8,200</b>	<b>8,000</b>
A	mm	3505	3200
	in	<b>138</b>	<b>126</b>
B	mm	2946	2896
	in	<b>116</b>	<b>114</b>
C	mm	3658	3480
	in	<b>144</b>	<b>137</b>
D	mm	2388	2184
	in	<b>94</b>	<b>86</b>

### Typical 5-Tine Grapple (Orange Peel)



1. Grapple Tines

2. Grapple Cylinders

3. Mounting Pin

#### Grapple Applications:

Select a grapple whose weight including material does not exceed the lift capacity shown for your specific machine.

**Note:** Conditions and material densities vary. Confirm your specific load density before determining machine balance.

#### General Material Weights:

1. Steel scrap, clippings compressed or bundled weigh approximately 919 kg **2,025 lbs** per yd<sup>3</sup>.
2. Shredded steel scraps, unprepared, weigh approximately 612 kg **1,350 lbs** per yd<sup>3</sup>.

### General Magnet Selection Guide

Magnet Size			Generator KW Rating					Approximate Magnet Operating Weight		Lifting Capacity					
Diameter		Cold Amps Max.	10	15	20	25	33	kg	lb	A		B		C	
in	mm									kg	lb	kg	lb	kg	lb
40	1016	30	T					816	<b>1,800</b>	408	<b>900</b>	272	<b>600</b>	170	<b>375</b>
45	1143	39	M					1270	<b>2,800</b>	816	<b>1,800</b>	499	<b>1,100</b>	283	<b>625</b>
48	1219	58		T				1315	<b>2,900</b>	794	<b>1,750</b>	526	<b>1,160</b>	272	<b>600</b>
57	1447	58		M				1860	<b>4,100</b>	1225	<b>2,700</b>	805	<b>1,775</b>	385	<b>850</b>
57	1447	80			T			1996	<b>4,400</b>	1225	<b>2,700</b>	816	<b>1,800</b>	385	<b>850</b>
66	1676	80			M			2812	<b>6,200</b>	1860	<b>4,100</b>	1247	<b>2,750</b>	612	<b>1,350</b>
66	1676	100				T		2903	<b>6,400</b>	1860	<b>4,100</b>	1247	<b>2,750</b>	612	<b>1,350</b>
72	1828	103				M		3719	<b>8,200</b>	2132	<b>4,700</b>	1429	<b>3,150</b>	680	<b>1,500</b>
72	1828	132					T	3765	<b>8,300</b>	2132	<b>4,700</b>	1429	<b>3,150</b>	680	<b>1,500</b>
78	1981	132					M	4445	<b>9,800</b>	2585	<b>5,700</b>	1776	<b>3,915</b>	844	<b>1,860</b>

T = Typical M = Maximum

#### Magnet Selection:

1. Select a magnet whose weight, including lifted material, does not exceed the lift capacity shown for your specific machine.
2. Select a magnet with a cold amp rating equal to or less than the figures shown in this chart.

#### Legend:

- A:** Pig iron and #1 hot melt; refers in general to low iron content slag or slabs.
- B:** #2 broken; scrap steel or cut offs.
- C:** Steel turnings; scrap from machining processes.



## STANDARD EQUIPMENT

### ENGINE AND RELATED ITEMS:

- Air cleaner, double element, dry type
- Engine, Komatsu SAA6D140E-5
- Fuel pre-filter (10 micron) with water separator
- Fuel primary filter (2 micron)
- Variable speed cooling fan, hydraulic drive, reversible

### ELECTRICAL SYSTEM:

- Alternator, 75 amp, 24 V
- Auto decelerator
- Batteries, 220 Ah, 2 x 12 V
- Horn, electric
- Interconnected horn and warning light
- Power supply, 12V
- Starting motor, 11kW
- Step light with timer
- Working lights-2 boom, 2 cab top front, 1 cab bottom

### UNDERCARRIAGE:

- 810 mm **32"** double grouser
- 9 track/3 carrier rollers (each side)
- Hydraulic track adjusters (each side)
- Sealed track
- Variable track gauge

### GUARDS AND COVERS:

- Dust-proof net for radiator and oil cooler
- Engine thermal guards and fan guard
- Pump/engine room partition
- Revolving frame undercover
- Track frame center undercover
- Travel motor guards

### OPERATOR ENVIRONMENT:

- Automatic air conditioner/heater/defroster system
- Damper mount, all-weather, sound-suppressed cab with tinted glass windows, lockable door, intermittent window wiper and washer, floormat, cigarette lighter and ashtray
- Multi-function color monitor, electronically-controlled throttle dial, electric service meter, gauges (coolant temperature, hydraulic oil temperature and fuel level), caution lights (electric charge, engine oil pressure, and air cleaner clogging), indicator lights (engine preheating and swing lock), level check lights (coolant, engine oil, and hydraulic oil), EMMS self-diagnostic system with trouble data memory
- Pull-up type front window, lockable
- Radio, AM-FM
- Rearview mirrors, right and left
- Seat, fully adjustable with suspension
- Seat belt 78 mm **3"** wide non-cinching

### HYDRAULICS:

- Control levers, wrist control levers for arm, boom, bucket, and swing with PPC system
- Control levers and pedals for steering and travel with PPC system
- Fully hydraulic, with Electronic Open-Center Load-Sensing (EOLSS) and engine speed sensing (pump and engine mutual control system)
- Heavy lift mode system
- In-line high-pressure filters
- Oil cooler

- One axial piston motor per track for travel with counter balance valve
- Shockless boom control
- Swing priority selection system
- Two-mode setting for boom
- Two axial piston motors for swing with single-stage relief valve
- Two control valves, 5+4 spools (boom, arm, bucket, swing, and travel)
- Two variable capacity piston main pumps
- Working modes (Power & Economy w/4 settings)

### DRIVE AND BRAKE SYSTEM:

- Brakes, hydraulic lock travel brakes, oil disc parking
- Hydrostatic two travel speed system with planetary final drive

### OTHER STANDARD EQUIPMENT:

- Automatic swing holding brake
- Catwalk
- Corrosion resistor
- Counterweight, 13600 kg **29,975 lb**
- Grease gun, electric pump w/indicator
- KOMTRAX™
- Large handrails
- Lift capacity chart
- Marks and plates, English
- One-touch engine oil drainage
- Paint, Komatsu standard
- PM tune-up service connector
- Slip-resistant plates
- Travel alarm



## OPTIONAL EQUIPMENT

- Front
  - 16.8 m **55'** 2-piece MH
  - 20.7 m **68'** 2-piece MH
- Cab front full guard
- Cab riser
  - 1981 mm **78"** manual tilt
- Front Guard Level 2\*

- Grapples
  - 2.29 m<sup>3</sup> **3.0 yd<sup>3</sup>** orange peel
  - 3.06 m<sup>3</sup> **4.0 yd<sup>3</sup>** orange peel
- 33 kW hydraulic drive generator (requires 1981 mm **78"** riser)
- Revolving frame undercover (HD)
- Top Guard Level 2\*
- Track roller guards (full length)
- Track frame undercover

### UNDERCARRIAGE:

- 1010 mm **40"** double grouser
- 1110 mm **44"** double grouser
- Widened carbody (762 mm **30"**)

\* Check local regulations or requirements for Front Guard or Top Guard

# KOMATSU®